

# Comparison of Health-Related Quality of Life of Patients With Untreated Chronic Lymphocytic Leukemia/Small Lymphocytic Lymphoma Who Received Zanubrutinib Versus Chemotherapy

## FULL TITLE

Patient-Reported Outcomes From a Phase 3 Randomized Study of Zanubrutinib Versus Bendamustine Plus Rituximab (BR) in Patients With Treatment-Naïve (TN) Chronic Lymphocytic Leukemia/Small Lymphocytic Lymphoma (CLL/SLL)

## SUMMARY DATE

June 2022

## KEY TAKEAWAYS

In the SEQUOIA trial, zanubrutinib was associated with improvements in health-related quality of life in patients with untreated chronic lymphocytic leukemia/small lymphocytic lymphoma compared with chemotherapy

## PHONETICS

How to say medical terms used in this summary



### Bendamustine

<BEN-duh-MUS-teen>

### Rituximab

<rih-TUK-sih-mab>

### BRUKINSA

<BROO-kin-sah>

### Tyrosine kinase inhibitor

<TY-ruh-seen KY-nays in-HIH-bih-ter>

### Lymphocytic leukemia

<LIM-foh-SIH-tik loo-KEE-mee-uh>

### Zanubrutinib

<ZAN-ue-broo-ti-nib>

Zanubrutinib is not approved outside of China as a therapy for chronic lymphocytic leukemia or small lymphocytic lymphoma, which is discussed in this summary. This summary reports the results of a planned interim analysis of the study, meaning the study is still ongoing.

## What is chronic lymphocytic leukemia or small lymphocytic lymphoma?

- ▶ Chronic lymphocytic leukemia or small lymphocytic lymphoma (also known as CLL and SLL) are a type of slow-growing blood cancer where an increased number of mature, but cancerous, lymphocytes are found in the blood and bone marrow, and/or in the lymph nodes
  - ▶ Lymphocytes are a type of white blood cell that normally produce antibodies that defend the body from germs
- ▶ CLL and SLL are essentially the same disease, the only difference being the location in the body where the cancer primarily occurs
  - ▶ CLL is when most of the cancer cells are in the bloodstream and the bone marrow. SLL is when most of the cancer cells are in the lymph nodes and are rare in the blood
- ▶ Patients with CLL/SLL often feel they have worse physical, mental, and social well-being due to the disease itself or from the side effects of treatment

## What is zanubrutinib?

- ▶ Zanubrutinib, sold under the brand name BRUKINSA<sup>®</sup>, is a Bruton's tyrosine kinase (BTK for short) inhibitor
  - ▶ BTK is a protein found in a type of white blood cell that plays a role in cell development and survival. Zanubrutinib works by blocking BTK function, which can keep cancer cells from growing and lead to death of cancer cells

## What was the aim of this research?

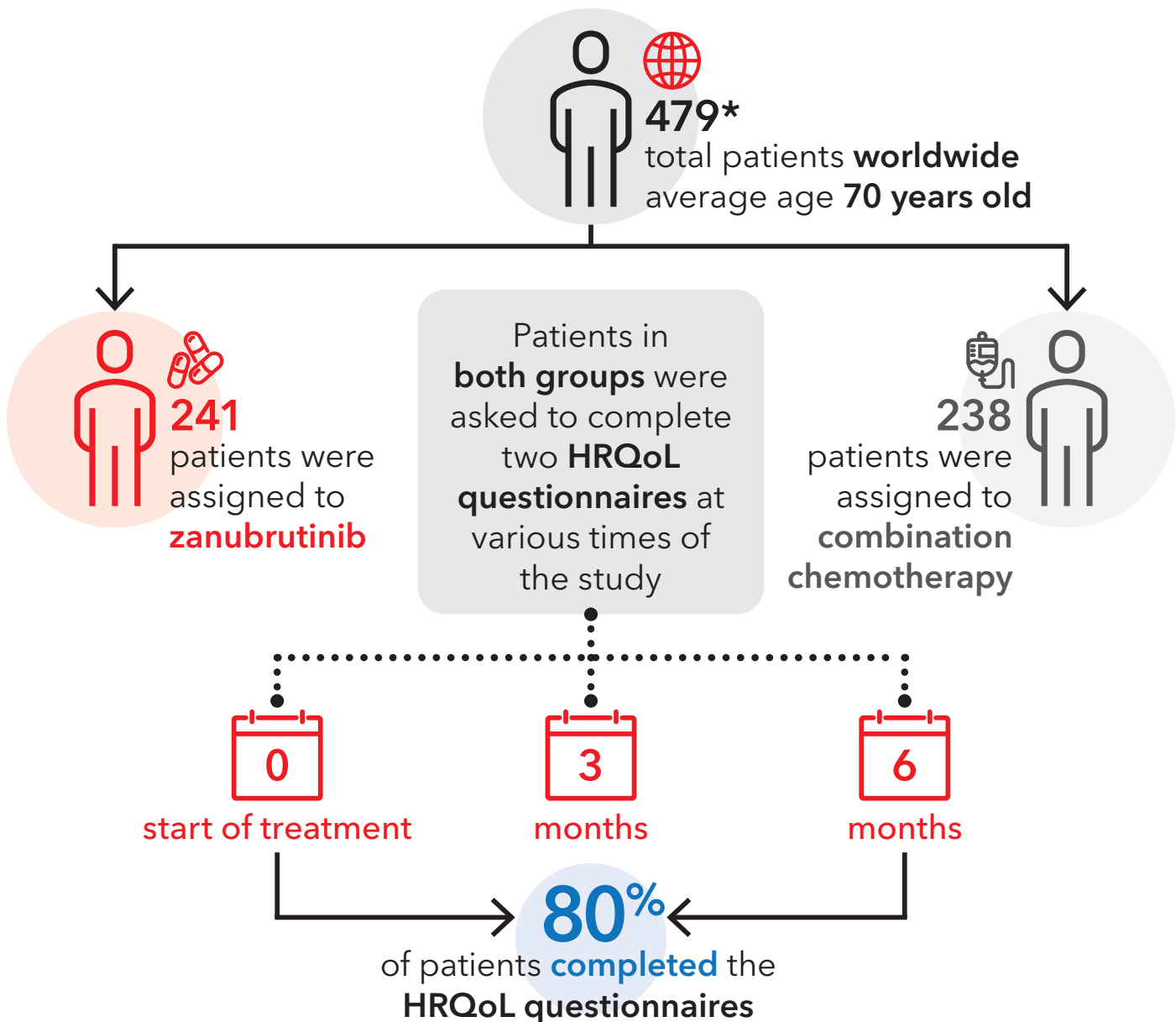
- ▶ An aim of the SEQUOIA study was to look at the health-related quality of life (HRQoL) of patients with untreated CLL/SLL who received zanubrutinib compared with the HRQoL of patients who received chemotherapy
  - ▶ Patients who received combination chemotherapy were given rituximab (an antibody) and bendamustine (a drug compound) at the same time
- ▶ Health-related QoL is a measure of a person's self-reported well-being; it can include feelings about physical health, emotional well-being, and the ability to take part in daily activities
  - ▶ Patients completed questionnaires that assessed their health and QoL, giving the investigators the patients' perspective on the impact of CLL/SLL and their treatment at various times throughout the study

## What does this summary describe?

- ▶ This summary describes changes in patient-reported HRQoL from the start of the study (baseline) to 3 and 6 months of treatment, specifically:
  - ▶ Overall HRQoL
  - ▶ Ability to perform activities of daily life
  - ▶ CLL/SLL symptoms or side effects (diarrhea, tiredness, etc.) experienced

## STUDY DETAILS

### Who took part in the study?



\*Patients missing a piece of their DNA in chromosome 17, a DNA mutation that is common in CLL/SLL, were not included in this population.

## What were the results of the study?

After  **3 months**

Patients taking **zanubrutinib** had significantly improved overall **HRQoL** compared with those who received **combination chemotherapy**

Patients saw improvements in



Work activities

Patients experienced reductions in



Diarrhea



Feeling tired



Feeling sick to the stomach

After  **6 months**

Overall **HRQoL** was improved in patients taking **zanubrutinib** than those who received **combination chemotherapy**

Improvements were also observed in ability to perform



Physical activities



Work activities

Patients continued to report fewer incidents of



Diarrhea



Feeling tired

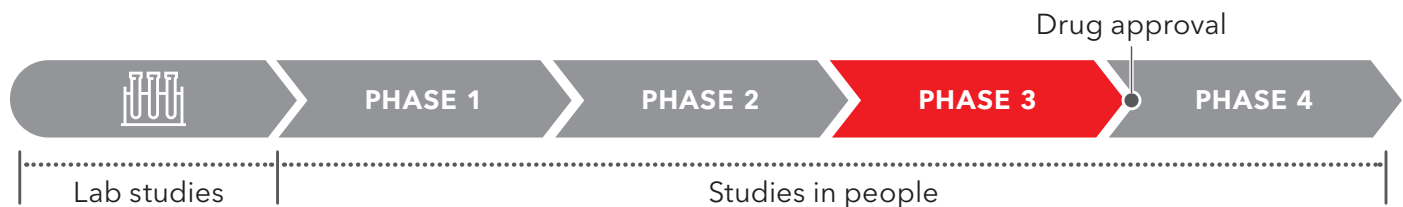


Feeling sick to the stomach

## Who sponsored the study?

This study was sponsored by BeiGene, Ltd. BeiGene would like to thank the trial investigators, site support staff, and especially the patients who took part in the study. This summary was prepared by Regina Switzer, PhD (BeiGene, Ltd.).

## Where is zanubrutinib in the developmental timeline?



## Are there plans for additional studies?

This study is ongoing and has not yet been completed. Other zanubrutinib studies are currently ongoing and can be viewed by going to:

<https://www.beigene.com/our-science-and-medicines/pipeline>

## Additional study information

For detailed study information, go to:

<https://clinicaltrials.gov/ct2/show/NCT03336333>

For more information about scientific studies in general, go to:

<https://clinicaltrials.gov/ct2/about-studies/learn>

## Need additional information?

**Email:** [info@beigene.com](mailto:info@beigene.com)

**Website:** <https://www.beigene.com>

**Address:** BeiGene, USA  
1900 Powell Street, Suite 500  
Emeryville, CA 94608

**Phone:** 1 (877) 828-5568

This summary only contains information from the scientific abstract, available by scanning the following QR code

