

PRELIMINARY RESULTS OF A PHASE 2 STUDY OF ZANUBRUTINIB IN PATIENTS WITH PREVIOUSLY TREATED B-CELL MALIGNANCIES INTOLERANT TO IBRUTINIB/ACALABRUTINIB

Mazyar Shadman,¹ Jeff P. Sharman,² Moshe Y. Levy,³ Ryan Porter,⁴ Syed F. Zafar,⁵ John M. Burke,⁶ Arvind Chaudhry,⁷ Benjamin Freeman,⁸ Jamal Misleh,⁹ Habte A. Yimer,¹⁰ Jennifer L. Cultrera,¹¹ Troy H. Guthrie,¹² Edwin Kingsley,¹³ Subramanya S. Rao,¹⁴ Dih-Yih Chen,¹⁵ Xiaoping Zhang,¹⁵ Adam Idoine,¹⁵ Aileen Cohen,¹⁵ Kunthel By,¹⁵ Linlin Xu,¹⁵ Jane Huang,¹⁵ and Ian Flinn¹⁶

¹Clinical Research Division, Fred Hutchinson Cancer Research Center, University of Washington, Seattle, WA, USA; ²Willamette Valley Cancer Institute and Research Center, Eugene, OR, USA; ³Texas Oncology-Baylor Charles A. Sammons Cancer Center, Dallas, TX, USA; ⁴SSM Health Dean Medical Group, Madison, WI, USA; ⁵Florida Cancer Specialists & Research Institute, Fort Myers, FL, USA; ⁶Rocky Mountain Cancer Centers, Aurora, CO, USA; ⁷Summit Cancer Centers, Spokane, WA, USA; ⁸Summit Medical Group, Florham Park, NJ, USA; ⁹Medical Oncology Hematology Consultants PA, Newark, DE, USA; ¹⁰Texas Oncology-Tyler, Tyler, TX, USA; ¹¹Florida Cancer Specialists & Research Institute, Leesburg, FL, USA; ¹²GenesisCare, Jacksonville, FL, USA; ¹³Comprehensive Cancer Centers of Nevada, Las Vegas, NV, USA; ¹⁴Alpha Med Physicians Group, Tinley Park, IL, USA; ¹⁵BeiGene (Beijing) Co., Ltd., Beijing, China and BeiGene USA, Inc., San Mateo, CA, USA; ¹⁶Sarah Cannon Research Institute/Tennessee Oncology, Nashville, TN, USA

INTRODUCTION

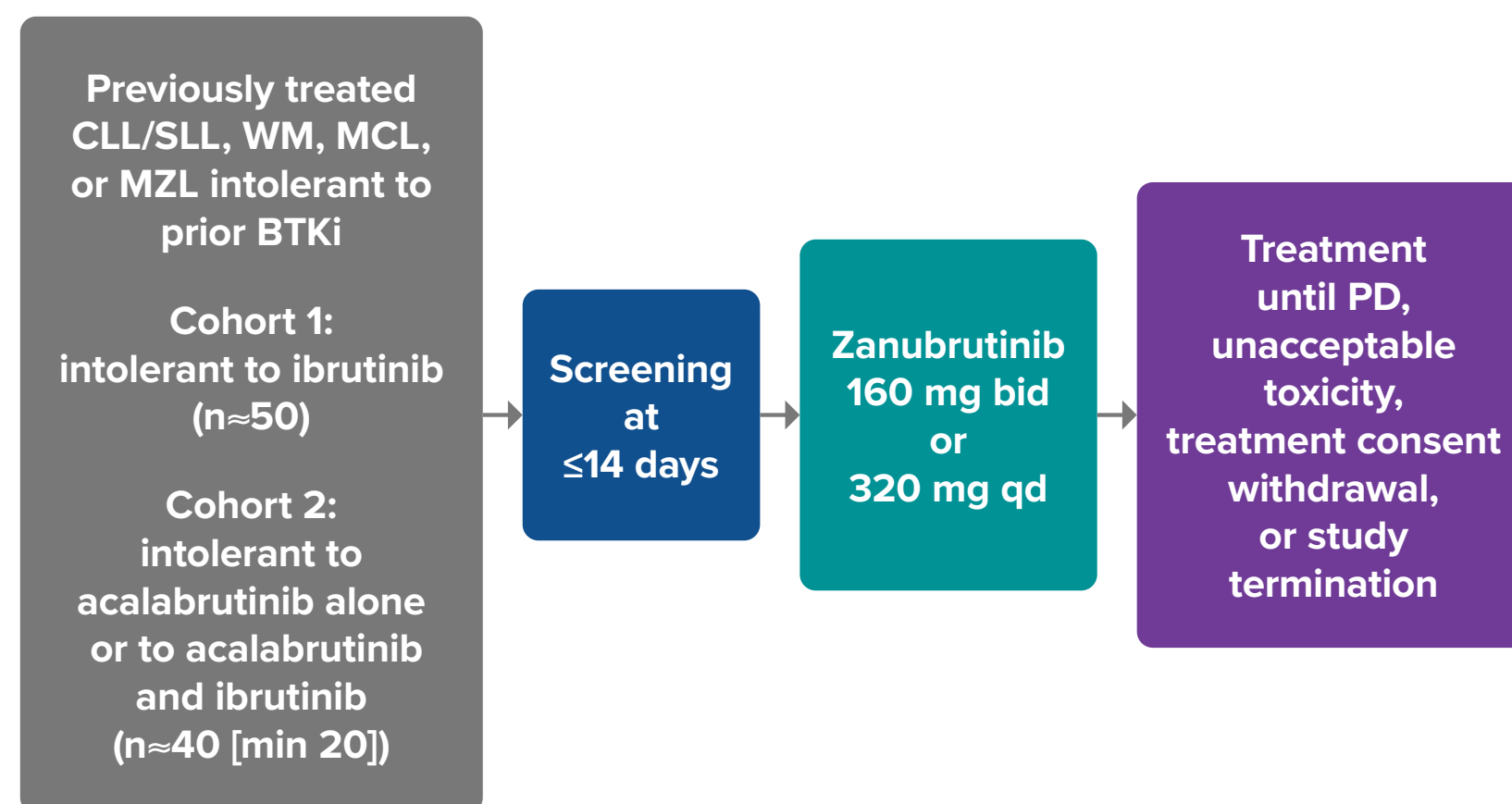
- Bruton tyrosine kinase inhibitor (BTKi) therapy is effective in several B-cell malignancies; however, its use is limited by adverse events (AEs) leading to discontinuation in some patients, which tend to occur early in treatment^{1,3}
- Zanubrutinib, a BTKi approved for the treatment of mantle cell lymphoma (MCL) and in development for other malignancies, is optimized for BTK selectivity and occupancy
- In the ASPEN trial comparing zanubrutinib to ibrutinib in patients with Waldenström macroglobulinemia, zanubrutinib showed lower rates of AEs leading to death (1% vs 4.1%), discontinuation (4% vs 9.2%), dose reduction (13.9% vs 23.5%), and dose holds (46.5% vs 56.1%) and a lower rate of atrial fibrillation/flutter (2% vs 15.3%)⁴
- BGB-3111-215** is a phase 2, multicenter, US, single-arm, open-label study of the safety and efficacy of zanubrutinib in ibrutinib- and/or acalabrutinib-intolerant patients with previously treated B-cell malignancies (**Figure 1**)

OBJECTIVES

- Primary objective: To evaluate the safety of zanubrutinib in patients intolerant to ibrutinib and/or acalabrutinib treatment compared with their ibrutinib and/or acalabrutinib intolerance as assessed by the recurrence and the change in severity of AEs
- Secondary objectives: To evaluate the efficacy of zanubrutinib with respect to investigator-assessed objective response rate, investigator-assessed disease control rate, and investigator-assessed progression-free survival and with respect to patient-reported outcomes

METHODS

Figure 1. Study Design



Key Inclusion Criteria

- Ibrutinib and acalabrutinib intolerance
 - Grade ≥ 2 nonhematologic toxicity for >7 days
 - Grade ≥ 3 nonhematologic toxicity for any duration
 - Grade 3 neutropenia with infection or fever
 - Grade 4 hematologic toxicity that persists until BTKi therapy is discontinued due to toxicity
 - Resolution of BTKi toxicities to grade ≤ 1 or baseline before initiating zanubrutinib treatment
- Additional acalabrutinib intolerance criteria
 - Grade ≥ 1 nonhematologic toxicity for >7 days
 - Grade ≥ 1 nonhematologic toxicity of any duration with ≥ 3 recurrent episodes
 - Inability to use acid-reducing agents or anticoagulants due to current BTKi use
- Resolution of grade 1 BTKi toxicities to grade 0 or baseline before initiating zanubrutinib treatment

Key Exclusion Criteria

- Disease progression during any BTKi treatment

CLL, chronic lymphocytic leukemia; bid, twice daily; BTKi, Bruton tyrosine kinase inhibitor; MCL, mantle cell lymphoma; MZL, marginal zone lymphoma; PD, progressive disease; qd, once daily; SLL, small lymphocytic lymphoma; WM, Waldenström macroglobulinemia.

RESULTS

- Patient demographics and baseline characteristics are described in **Table 1**

Table 1. Patient Demographics and Baseline Characteristics

Characteristics	Cohort 1 (n=57)	Cohort 2 (n=7)	Total (N=64)
Indication, n (%)			
CLL	38 (66.7)	4 (57.1)	42 (65.6)
WM	9 (15.8)	1 (14.3)	10 (15.6)
SLL	6 (10.5)	0 (0)	6 (9.4)
MCL	2 (3.5)	1 (14.3)	3 (4.7)
MZL	2 (3.5)	1 (14.3)	3 (4.7)
Age, median (range), y	71 (49-91)	71 (65-76)	71 (49-91)
Male, n (%)	30 (52.6)	5 (71.4)	35 (54.7)
ECOG PS 0, n (%)	33 (57.9)	4 (57.1)	37 (57.8)
No. of prior therapy regimens, median (range)	1 (1-12)	3 (2-5)	2 (1-12)
Prior BTKi, n (%)			
Ibrutinib monotherapy	50 (87.7)	5 (71.4) ^a	55 (85.9)
Ibrutinib combination therapy	8 (14.0) ^b	0 (0)	8 (12.5)
Acalabrutinib monotherapy	NA	7 (100)	7 (10.9)
Time on most recent prior BTKi, median (range), mo	9.7 (1.1-73.7)	2.1 (0.5-26.8)	9.2 (0.5-73.7)
On-study zanubrutinib dosing regimen, n (%)			
160 mg bid	35 (61.4)	5 (71.4)	40 (62.5)
320 mg qd	22 (38.6)	2 (28.6)	24 (37.5)

Data cutoff: 01 Mar 21.
BTKi, Bruton tyrosine kinase inhibitor; bid, twice daily; CLL, chronic lymphocytic leukemia; ECOG PS, Eastern Cooperative Oncology Group performance status; MCL, mantle cell lymphoma; MZL, marginal zone lymphoma; NA, not applicable; qd, once daily; SLL, small lymphocytic leukemia; WM, Waldenström macroglobulinemia.
^aFive patients had both prior ibrutinib and acalabrutinib therapies.
^bOne patient received ibrutinib combination therapy followed by ibrutinib monotherapy.

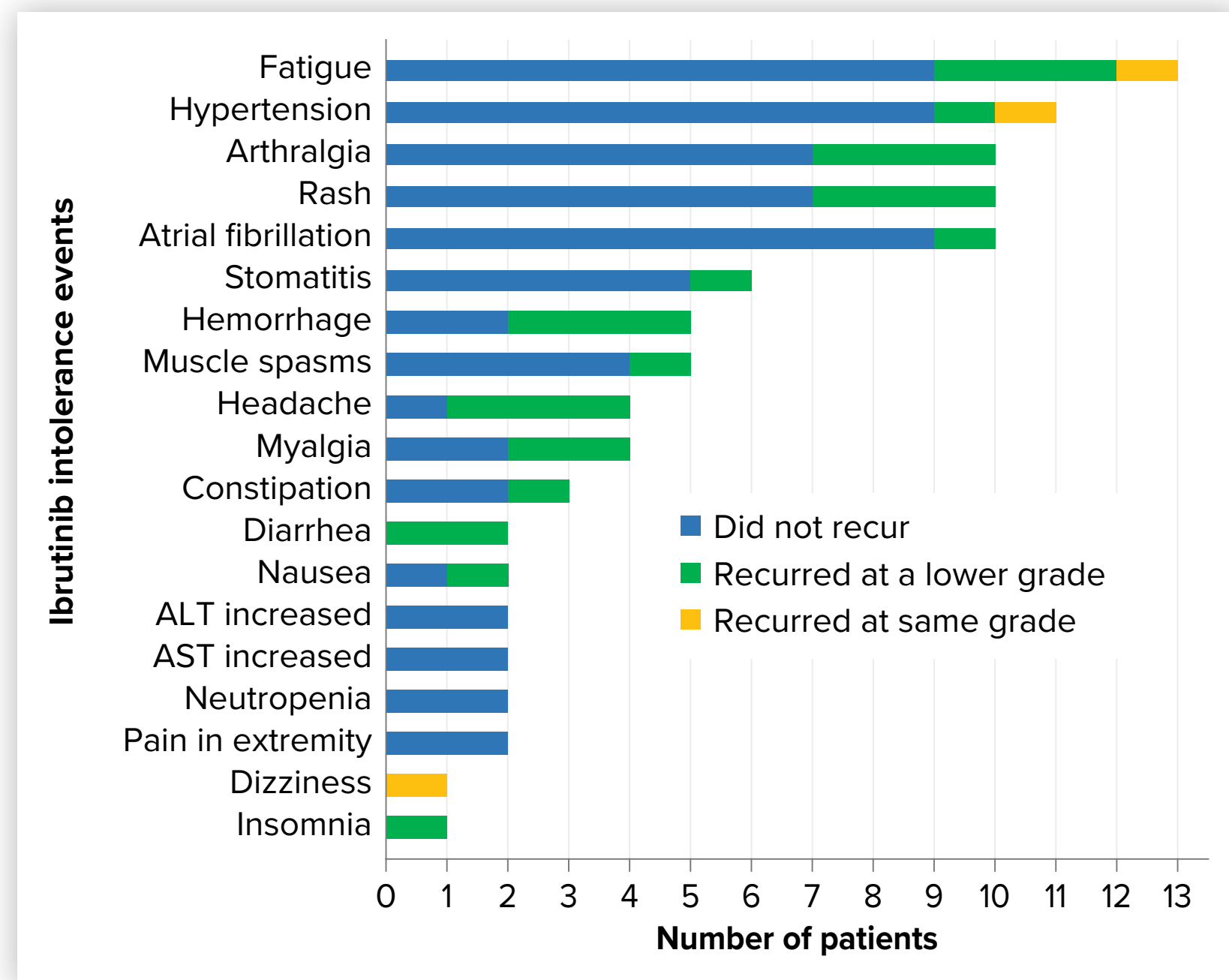
- At data cutoff, 7 patients had discontinued treatment, and 2 had discontinued the study (**Table 2**)
- Overall, 3 patients discontinued zanubrutinib due to AEs, none of which were due to a recurrence of prior intolerance event

Table 2. Patient Disposition

	Cohort 1 (n=57)	Cohort 2 (n=7)	Total (N=64)
Patients discontinued from treatment, n (%)	7 (12.3)	0 (0)	7 (10.9)
Adverse event	3 (5.3) ^a	0 (0)	3 (4.7)
Progressive disease	2 (3.5)	0 (0)	2 (3.1)
Physician decision	1 (1.7) ^b	0 (0)	1 (1.6)
Withdrawal by patient	1 (1.7) ^c	0 (0)	1 (1.6)
Patients remained on treatment, n (%)	50 (87.7)	7 (100)	57 (89.1)
Patients discontinued from study, n (%)	2 (3.5)	0 (0)	2 (3.1)
Death	1 (1.7) ^d	0 (0)	1 (1.6)
Withdrawal by patient	1 (1.7) ^e	0 (0)	1 (1.6)
Patients remaining on study, n (%)	55 (96.5)	7 (100)	62 (96.9)
Zanubrutinib exposure, median (range), mo	6.2 (0.6-16.6)	5 (3.2-8.7)	5.9 (0.6-16.6)
Follow-up, median (range), mo	NA	NA	6 (0.7-16.6)

Data cutoff: 01 Mar 21.
NA, not applicable.
^aAEs leading to discontinuation were a penile bleed, COVID-19 pneumonia, and increased alanine aminotransferase and aspartate transaminase.
^bPatient not responding to treatment.
^cPatient withdrew from study after grade 3 syncope related to diabetes.
^dDeath due to COVID-19 pneumonia.

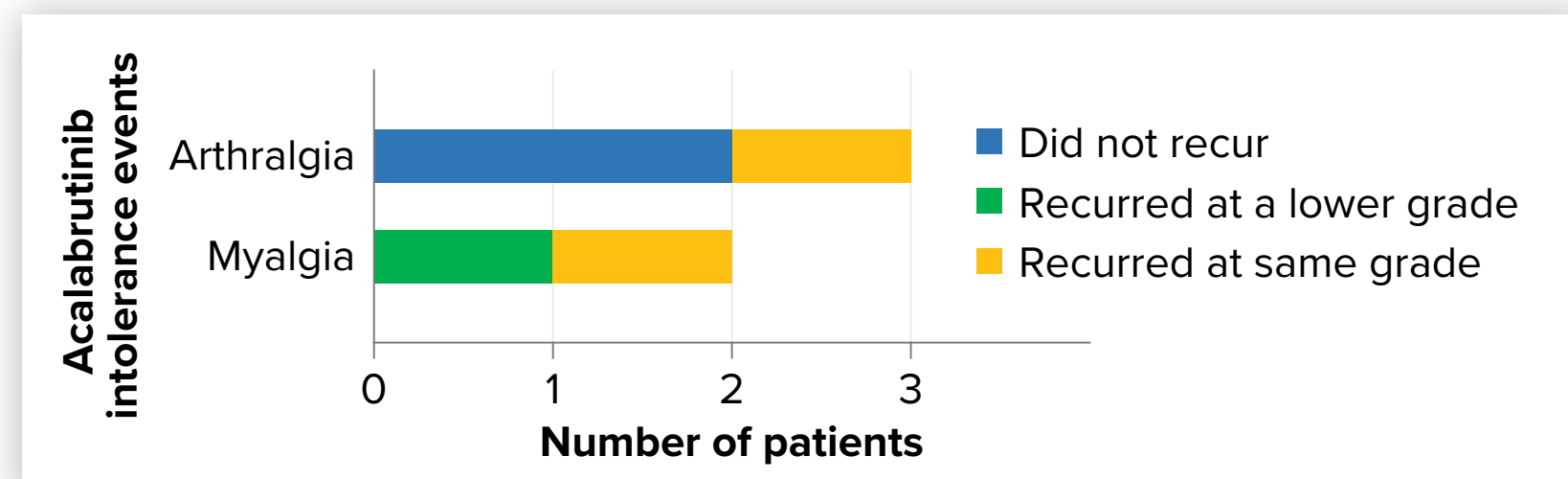
Figure 2. Recurrence of Ibrutinib Intolerance Events on Zanubrutinib^a



Data cutoff: 01 Mar 21.
ALT, alanine aminotransferase; AST, aspartate transaminase.
^aIntolerance events occurring in ≥ 2 patients or recurring in ≥ 1 patient shown here.

- 86/115 ibrutinib intolerance events (75%) did not recur
 - Of the 29 recurrent ibrutinib intolerance events, 26 (90%) recurred at a lower severity, and 3 (10%) at the same severity (**Figure 2**)

Figure 3. Recurrence of Acalabrutinib Intolerance Events on Zanubrutinib^a



Data cutoff: 01 Mar 21.
^aIntolerance events occurring in ≥ 2 patients shown here.

- 3/5 patients intolerant to both ibrutinib and acalabrutinib experienced recurrence of their acalabrutinib event (**Figure 3**)
- 2 patients had the same intolerance event on ibrutinib and acalabrutinib; neither event recurred on zanubrutinib
 - Patient 1 had grade 2 pain in extremity on ibrutinib and acalabrutinib emergent after 7 days and 3 days, respectively (on study for ~7 months)
 - Patient 2 had atrial fibrillation on ibrutinib (grade 3) and acalabrutinib (grade 2) emergent after 8 months and 20 months, respectively (on study for ~6 months)
- 9/12 acalabrutinib intolerance events (75%) did not recur
 - Of the 3 recurrent acalabrutinib intolerance events, 1 (33%) recurred at a lower severity, and 2 (67%) at the same severity

Recurrence Summary

- 75% of ibrutinib and acalabrutinib intolerance events did not recur on zanubrutinib
- No ibrutinib or acalabrutinib intolerance recurred at a higher grade on zanubrutinib
- All grade 4 intolerance events did not recur on zanubrutinib (neutropenia [n=2], alanine aminotransferase increase [n=1], aspartate transaminase increase [n=1])
- Most (68.3% [28/41]) grade 3 intolerance events did not recur on zanubrutinib
 - Of the grade 3 intolerance events that recurred, all recurred at a lower severity
- 20 ibrutinib intolerance events and 7 acalabrutinib intolerance events occurred in 1 patient each and did not recur on zanubrutinib
- 2 ibrutinib intolerance events, dizziness and insomnia, occurring in 1 patient each, recurred while on zanubrutinib at the same severity and lower severity, respectively

Table 3. Safety Summary

Category, n (%)	Cohort 1 (n=57)	Cohort 2 (n=7)	Total (N=64)
Patients with at least 1 AE	45 (78.9)	7 (100)	52 (81.3)
Grade ≥ 3	11 (19.3)	3 (42.9)	14 (21.9)
Serious AE	3 (5.3) ^a	2 (28.6) ^b	5 (7.8)
AE leading to treatment discontinuation	3 (5.3) ^c	0 (0)	3 (4.7)
AE leading to dose interruption	11 (19.3)	4 (57.1)	15 (23.4)
AE leading to dose reduction	2 (3.5)	1 (14.3)	3 (4.7)
AE leading to death	1 (1.8) ^d	0 (0)	1 (1.6)

Data cutoff: 01 Mar 21.
AE, adverse event.
^aPain in jaw (grade 2), COVID-19 pneumonia (grade 5), anemia (grade 2).
^bFelicitic neutropenia (grade 3) and gastroenteritis salmonella (grade 3), COVID-19 (grade 3).
^cPenile bleed (grade 2), COVID-19 pneumonia (grade 5), increased alanine aminotransferase and aspartate transaminase (grade 3).
^dCOVID-19 pneumonia.

Table 4. Adverse Events

Most Common AEs in $\geq 5\%$ of Patients, n (%)	All Grade (N=64)	Grade ≥ 3 (N=64)
Contusion	11 (17.2)	0 (0)
Fatigue	11 (17.2)	0 (0)
Myalgia	10 (15.6)	0 (0)
Neutrophil count decreased/neutropenia	9 (14.1)	7 (10.9)
Dizziness	7 (10.9)	0 (0)
Cough	6 (9.4)	0 (0)
Diarrhea	6 (9.4)	1 (1.6)
Epistaxis	5 (7.8)	0 (0)
Pain in extremity	5 (7.8)	0 (0)
Hypertension	4 (6.3)	1 (1.6)
Muscle spasms	4 (6.3)	0 (0)
Nausea	4 (6.3)	0 (0)
Pruritus	4 (6.3)	0 (0)
Rash	4 (6.3)	0 (0)

Data cutoff: 01 Mar 21.
AE, adverse event.

- 81.3% of all patients experienced at least 1 AE (**Table 3**)
- The most common grade ≥ 3 AE was neutropenia/neutrophil count decrease (n=7 [10.9%]; **Table 4**)
- Bleeding events occurred in 18 patients (28.1%)
 - Grade 1: 14 (21.9%)
 - Grade 2: 4 (6.3%)
- Atrial fibrillation/flutter occurred in 1 patient (grade 2, 1.6%); this was a recurrence of an ibrutinib intolerance (grade 3). Patient was treated with digoxin and remains on zanubrutinib treatment
- Infections occurred in 15 patients (23.4%)
 - Grade 1: 1 (1.6%)
 - Grade 2: 11 (17.2%)
 - Grade 3: 2 (3.1%; COVID-19 and gastroenteritis salmonella)
 - Grade 5: 1 (1.6%; COVID-19–related pneumonia)

REFERENCES

- Mato AR, et al. *Hematologica*. 2018;103:874.
- Yazdy M, et al. *Blood*. 2019;134(suppl 1):abst#4311.
- Tim CS, et al. *EHA 2019*. Abstract P5159.
- Dimitropoulos MA, et al. *EHA 2020*. Abstract S225.

ACKNOWLEDGMENTS

We would like to thank the investigators, site support staff, and especially the patients for participating in this study.

We would like to thank Subhash Pruthi, MD; Nural Wahid, MD; Joseph Potz, MD; and Avel Serey, MD for their contributions to this study.

This study was sponsored by BeiGene. Editorial support was provided by Bio Connections, LLC and funded by BeiGene.

Contact: mshadman@fredhutch.org

DISCLOSURES

MS served as a consultant for AbbVie, Genentech, AstraZeneca, SoundBio, Pharmaceutics, Verastem, ADC Therapeutics, Biogen, Cellectis, Bristol Myers Squibb, MorphoSys, TG Therapeutics, Inatec Pharma, Kite Pharma, Adaptive Biotechnologies, Epizyme, and Atara Biotherapeutics and received research funding from Mustang Bio, Celgene, Bristol Myers Squibb, Pharmaceutics, Glaxo, Genentech, AbbVie, TG Therapeutics, Biogen, AstraZeneca, and Sunovion.
JPS served as a consultant for Pharmaceutics, Celgene, TG Therapeutics, Genentech, AbbVie, Acerta Pharma/AstraZeneca, Biogen, Pfizer, and Bristol Myers Squibb and received research funding from Pharmaceutics, Genentech, Celgene, Acerta Pharma, Glaxo Sciences, Seattle Genetics, TG Therapeutics, Merck, and Takeda.
MFL has current employment at Bayer University Medical Center and served as a consultant and received research funding from BeiGene.
SFL has current employment with Florida Cancer Specialists and Research Institute and received research funding from Sarah Cannon Research Institute, honoraria from Karyopharm, AstraZeneca and Bristol Myers Squibb, travel expenses from AstraZeneca and Bristol Myers Squibb.
JMB served as a consultant for Genentech/Roche, AbbVie, Seattle Genetics, Bayer, Adaptive Biotechnologies, Verastem, MorphoSys, Kura Oncology, Epizyme, BeiGene, Kymera, and Novartis and served on the speakers' bureau for Seattle Genetics and BeiGene.
ACH served as a consultant and received honoraria from Bayer and holds stocks in Novartis.
HAY has current employment at Texas Oncology, served as a consultant for AstraZeneca, Amgen, Karyopharm, is on the speakers' bureau for Janssen, Karyopharm, Amgen, and Takeda, received research funding from Janssen and BeiGene and travel expenses from Janssen, AstraZeneca, BeiGene, Karyopharm, and Amgen and holds stock in Epizyme and Karyopharm.
JLC has current employment with Florida Cancer Specialists, received research funding from BeiGene, Takeda, Genentech, Merck, Acerta Pharma, Lilly, AstraZeneca, Bristol Myers Squibb, EMD Serono, Seattle Genetics, and was on the speakers' bureau for Celgene, Amgen, and Aurigene.

THG has current employment with Genesis Care LTD.
DVC, XZ, AI, KCO have current employment and stock ownership at BeiGene.
KB has current employment at BeiGene.
LI has current employment at BeiGene and previous employment with AstraZeneca.
JH has current employment, leadership, patents/stock ownership, and travel expenses from BeiGene.
IP served as a consultant for AbbVie, AstraZeneca, BeiGene, Genentech, Glaxo Sciences, Great Point Partners, Inutec Therapeutics, Janssen, Juno Therapeutics, Kite Pharma, MorphoSys, Nune Therapeutics, Pharmaceutics, Roche, Seattle Genetics, Takeda, TG Therapeutics, Urum Therapeutics, Verastem, and Yngli Pharmaceuticals and received research funding from AbbVie, Acerta Pharma, Agios, AstraZeneca, BeiGene, Celgene, Cellectis, Constellation Pharmaceuticals, Curis, Forma Therapeutics, Farylen, Genentech, Glaxo Sciences, IGM Biosciences, Inocyte, Infinity Pharmaceuticals, Janssen, Juno Therapeutics, Karyopharm Therapeutics, Kite Pharma, Loxo, Merck, MorphoSys, Novartis, Pfizer, Pharmaceutics, Portola Pharmaceuticals, Ribozon Pharmaceuticals, Roche, Seattle Genetics, Takeda, Teva, TG Therapeutics, Trillium Therapeutics, Tripline Research & Development Corp, Urum Therapeutics, and Verastem.
RP, BF, JM, EK, SSR have nothing to disclose.

Copies of this poster obtained through Quick Response (QR) Code are for personal use only and may not be reproduced without permission from GCMC and the author of this poster.

